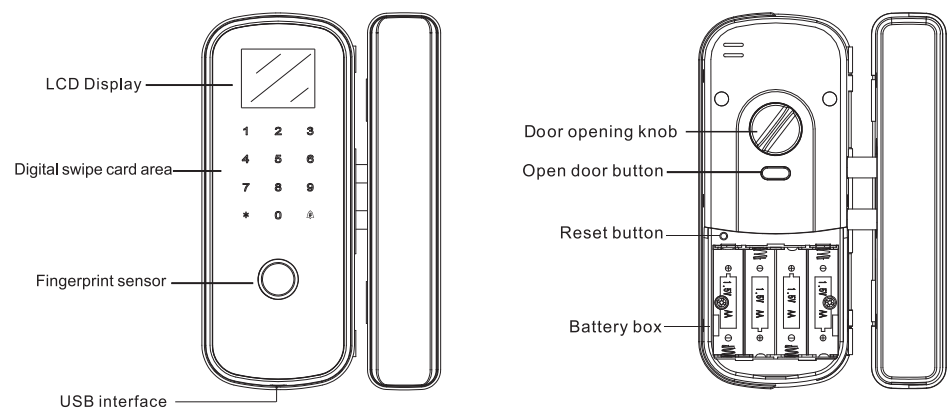


GLASS DOOR LOCK



Thank you for choosing the smart fingerprint glass door lock

To help you properly use the Smart Lock Product (hereinafter referred to as "the Product"), please read the instructions carefully before installing .

For the actual specifications and configurations of the products described in this manual, please refer to the relevant agreements or consult with retailer.

If you fail to operate according to the instructions in the manual, or ask non-our technical personnel to repair or change the product, we will not bear any responsibility for the damage caused thereby.

The graphs and charts provided in this manual are only for the purpose of explanation and description and may differ from the actual products. In addition, the actual specifications and configurations of the products may be changed from time to time as required. Therefore, they are different from the contents in this manual.

If you find any inconsistency between the actual situation of this product and this manual, or if you want to get the latest information or have any questions and ideas, please feel free to call our after-sales service department.

Technical parameters

Power supply	1.5V AA X 4 or USB 5VDC	CARD capacity	≤ 240 sets
Standby current	<55mA(more than one year battery life)	Record queries	≤ 250 groups
Working current	<250mA(strong driving force)	Resolution	500 dpi
Static current	<50uA(Super long standby)	Rejection rate	≤ 0.15%
Unlock mode	Fingerprint, password, ID card, remote kit (optional)	False recognition rate	≤ 0.0000 4%
Password capacity	≤ 240 groups	The working temperature	-30-60℃
Fingerprint capacity	≤ 200 groups	Relative humidity	20-93%

Product details

Any password, fingerprint, and ID card can be opened before leaving the factory (the length of the password is 6-8 digits), which is to facilitate user experience.

Fake password: For example: the correct password is 112233, we can enter 5566 112233 5566 when unlocking, (5566 is a false password at this time, in order to prevent others from remembering your password.)

Unlock/lock: The room is unlocked/locked by the door opening key and manual door opening knob.

Normally open mode setting : After unlocking, long press the unlock button on the back to enter the normally open mode.In the long-open mode, the lock will not be automatically locked, and the normally open mode will be exited after manual locking.

Indoor anti-lock setting: After locking, long press the unlock button on the back of the lock body to enter the indoor anti-lock mode.After the indoor lock is locked, only the administrator or one-time password user can unlock the lock outdoors.

Set up

Lighting the screen, long press the *key to enter the setting menu, please add an administrator first, there is no administrator at the factory. Administrator verification is required when entering the setup menu in the future.(Note: 2,8,4,6 are up, down, left and right keys,* is the reverse,# is the confirm. After the system setting is completed, you can press * to return or wait for the system to exit .)

① Add an administrator » press # to confirm » select the content you want to add.

Note: Fingerprint 0/3: means 1 administrator can add 3 fingerprints, and 3 fingerprints can be added consecutively.

②Add users » press # to confirm » select the content you want to add.

Note: Fingerprint 0/3: means 1 user can add 3 fingerprints, and 3 fingerprints can be added continuously.

③Delete the user » press # to confirm » select the person you want to delete.

Note: Do not delete the administrator casually. At least one administrator must be kept in the lock, because the administrator authentication is required when entering the setting interface.

If you delete all the administrators, the lock does not require administrator verification, and anyone can enter the setting interface, which is very dangerous.

④System information » press # to confirm » check the contents of the lock.

⑤Unlock record » press # to confirm » view unlock record.

⑥Remote control settings » press # to confirm » 1 add remote control, 2 delete all remote control.

⑦System setting » press # to confirm » 1 time setting: (46 means left and right movement, 28 means addition and subtraction,) 2 volume setting, 3 lock delay, 4 door magnetic delay, 5 card wakeup (it is recommended that this function be turned on, It is more convenient to open and use), 6 languages, 7 restore factory settings.

⑧One time password » press # to confirm, you can add 6 passwords, choose to add.

A password can only be used once, please modify it after use.

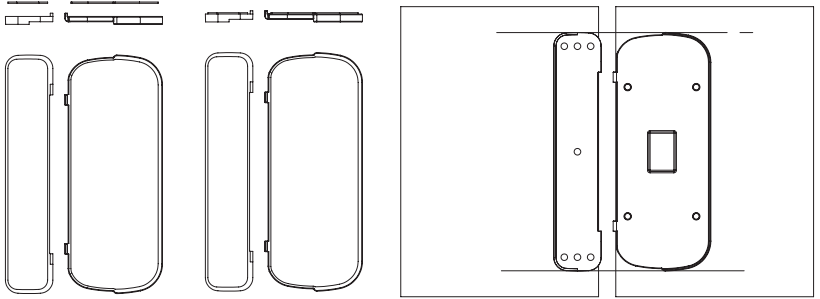
⑨Unlocking time period » press # to confirm, 3 unlocking time periods can be set every day, 2 8, 4, 6 are the keys for moving up and down, left and right.

Installation instructions

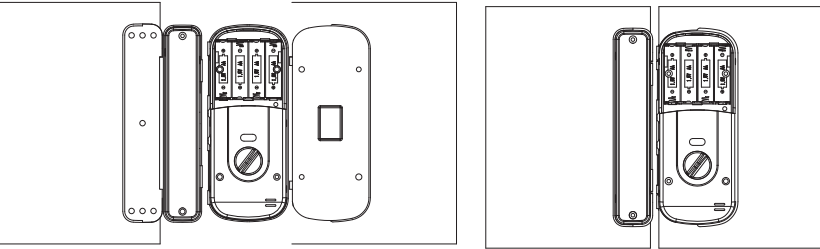
Attach the main lock body/sub-lock fixing plate

1. Stick the double-sided adhesive tapes to the flat side of the adhesive tapes, select the appropriate installation height, and stick the adhesive tapes to the glass door (the upper and lower alignment of the adhesive tapes must be ensured).

--- The mounting plate of the main lock and door magnetic is pasted with double-sided adhesivetape and fixed on the glass door in parallel alignment---



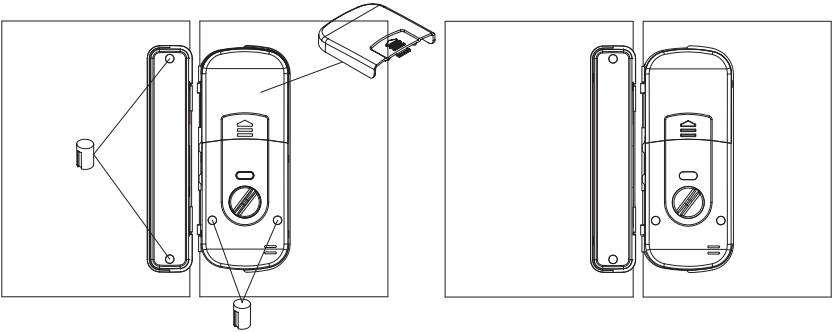
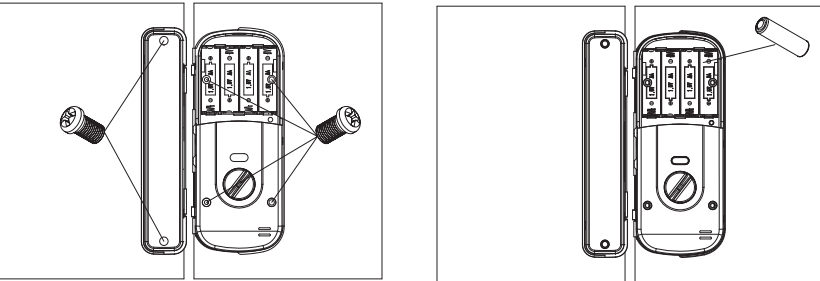
2. Install the main lock /door magnetic
Push the main lock/door magnetic into place along the fixing plate respectively as shown in the figure



3. Fixing the main lock and door magnetic

Take off the battery cover, tighten the 6 screws of the main lock and door magnetic as shown in the diagram, and then put the rubber plug in the accessories package into the screw hole and press it flat. Then load the battery as shown in the diagram and close the battery cover.

--- Install the battery after installing the fixing screw of the main lock and door magnetic. Install the rubber plug and battery cover after the test product function is normal---



4. Left-open/right-open direction adjustment method
When left-open/right-open direction is needed to be reversed, remove the 6 screws on both sides of the rear lock body (battery holding part), rotate the front lock body 180, and then tighten the 6 screws.

Fault description

The phenomenon of	Reason	Elimination method	The phenomenon of	Reason	Elimination method
No response of unlock with ID card/fingerprint/ password/remote kit	1. The battery is dead 2. Other	1. Change the battery or use emergency power 2. Restore factory Settings or contact after-sales service	The door cannot be automatically locked	1. The battery is dead 2. Not automatic lock mode	1. Replace the battery 2. Set to automatic lock door mode
The locking tongue does not move or quiver	1. Doors are not aligned 2. Low battery	1. Try again after the doors are aligned 2. Unlock with emergency power	Cannot set door card/fingerprint/password	1. Not being empowered 2. Not following the steps 3. Input more than 240 sets of door passwords, more than 240 sets of card capacity and more than 200 sets of fingerprints.)	1. Authorization (enter management fingerprint) 2. Operate according to the previous door lock setting.) 3. Delete no open door card/fingerprint/password required
Unable to read fingerprints	1. Dry and wrinkled finger skin 2. After long use, the collection surface becomes unclean or has scratches 3. The other	1. Make your fingers slightly moist to make your fingerprints clear 2. Use non-drying adhesive tape to paste the dirt on the surface of the head 3. Restore factory Settings or contact after-sales service			

Lock maintenance and maintenance

- Daily maintenance and maintenance
1. Do not let the lock face contact with corrosive substances, so as to avoid damaging the protective layer of the lock face and affecting the gloss of the lock face.
 2. If the door is deformed, it will cause the combined inclined tongue to enter the door frame box to have too much friction and cannot be completely extended. At this time, the position of the door gusset plate should be adjusted.
 3. After using the fingerprint window for a long time, the surface will be stained with dirt or wet. Please wipe it gently with a soft dry cloth.
 4. Please replace the battery immediately after the alarm of low battery, so as to ensure the normal use of the door lock. When replacing the battery, please pay attention to the positive and negative terminals.
 5. Do not use hard or sharp objects to mark the surface of the fingerprinting window (including fingernails).
 6. Each time a fingerprint is taken, the fingerprint part of the finger is flat against the fingerprint reader.
 7. If the lock is not flexible in rotation or cannot be maintained in the correct position, professionals should be asked to add mechanical lubricating oil to the lock core.
 8. Always keep lubricant at the rotating part of the lock body to ensure smooth transmission and prolong service life. It is recommended to check once every six months or once a year, and check whether the fixing screws are loose to ensure the fastening.
 9. Alkaline batteries are recommended; Carbon and alkaline batteries and old and new batteries can not be mixed, depleted batteries please remove.